

Corporate Data 2023



HONMA Corporation



Since the foundation of our company in 1934, we have enjoyed the continued support and corporation of our valued customers and clients in business.

We convey our heartfelt gratitude and appreciation to our customers and clients for this sustained support and hope our future business relations will grow stronger and mutually beneficial.

As a corporate citizen, we place priority on contribution to our communities and society at large. We will therefore make every effort to further expand a reliable and trustworthy relationship with our customers and clients through the creation of a better environment for the harmonious co-existence of humans, nature and cultures by responding promptly to the ever-changing needs of society.

We look forward to your continued support in business and other areas in the future.

Tatsuro Honma
CEO and President,
Honma Corporation

Outline

● **Company Name:** Honma Corporation

● **Address:** Nishiminatomachi-dori San-no-cho 3300-3, Chuou-ku, Niigata-city, Niigata 951-8650 Japan

Phone: +81-25-229-2511

● **Representative:** Tatsuro Honma, CEO and President

● **Founded:** October 1, 1934

● **Registered:** March 1, 1946

● **Capital:** 1,000,000,000(one billion) yen

● **Sales:** 45,100,000,000(forty five billion and one hundred million) yen (FY 2022)

● **Employees:** 530 employees as of July 2023

● **Certification holders:** 18 professional engineers

58 first-class architects

254 first-class civil engineers and managers

141 first-class construction engineers and managers

● **Lines of Business:**

1. Contracting for construction works.
2. Exploration, planning, research, assessment, diagnosis, location survey, supervising, designing management and consulting services for construction works.
3. Sale/purchase of real estates, leasing, brokerage, maintenance, management, appraisal and consulting.
4. Geological survey, creation and sale of lands, construction and sale of residential Buildings.
5. Exploration, planning designing, management and consulting services for development of communities, cities, ocean and environmental facilities etc.
6. Planning, designing, management, construction, leasing, transfer, maintenance and operation of governmental Buildings, education/cultural facilities, roads, ports, airports, water and sewerage, waste treatment facilities, other public facilities and the like.
7. Designing, manufacturing, sale, leasing, repair and brokerage for these services for construction materials, equipment and machinery.
8. Collection, transportation, treatment, recycling of wastes and construction byproducts, removal of environmental pollutants survey, planning, management and consulting for these services.
9. Land, marine and air transportation services.
10. Ownership, management and consulting for bath houses, lodging, sports, health and medical service facilities and commercial areas for sales, restaurants and bars.
11. Obtaining, licensing and sale of industrial property rights, copyrights, know-how and the like.
12. Financial business including loaning, debt guarantee, purchase of debts etc, and general leasing.
13. Property and Casualty Insurance Agents, advertising of Life Insurance and securing and dispatching of temporary employees.
14. Any other business associated with the above paragraphs.

● **Authorization/ registration:**

Specified construction business: obtained a contractor permit from Ministry of Land, Infrastructure, Transport and Tourism, (Toku-4) No.2475

First-class Architectural firm: Registered with Niigata prefecture, (wa) No.575 Survey business: Registered with Ministry of Land, Infrastructure, Transport and Tourism, (11) No.8052

Building lots and transaction business: obtained a real estate agency permit from Ministry of Land, Infrastructure, Transport and Tourism, (13) No.2291

Transaction Business Bldg. Lots and Transaction Business Civil engineering Consultant business: Registered with Ministry of Land, Infrastructure, Transport and Tourism, Ken-30 No.6299

Typell Forwarding business: Registered with Ministry of Land, Infrastructure, Transport and Tourism, Koku-sou-ka-fuku-6 1-27

ISO45001: MSA-SS-186

ISO9001: MSA-QS-2729

ISO14001: MSA-ES-355

Directors, Auditors and Executive Officers

●Directors and Statutory Auditors

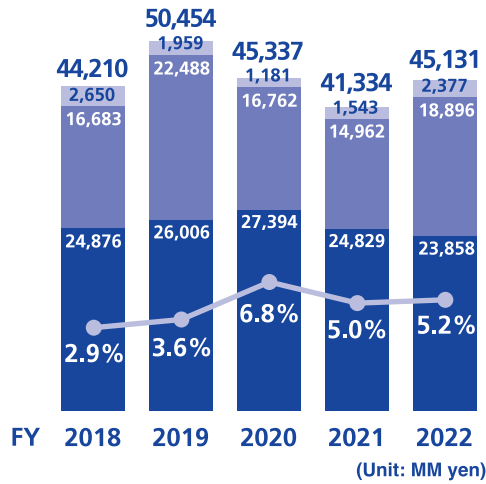
Representative/Director **Tatsuro Honma**
Representative/Director **Masataka Honma**
Director **Takafumi Ito**
Director **Hirohisa Fujita**
Director **Yuji Okumura**
Director **Masaki Okada**
Director **Mutsumu Kaneko**
Standing Statutory Auditor **Manabu Furukawa**
Statutory Auditor **Go Kawada**
Statutory Auditor **Takeo Kodama**

●Executive Officers

President/Chief Executive Officer **Tatsuro Honma**
Executive Vice President **Masataka Honma**
Senior Managing Officer **Takafumi Ito**
Senior Managing Officer (Manager for Technology, Tokyo Head Office) **Shigeru Higashiyama**
Managing Officer/Executive Director of Administration Main Office **Hirohisa Fujita**
Managing Officer/Executive Director of Engineering Main Office **Yuji Okumura**
Managing Officer/Executive Director of Bldg. Construction Main Office
(Manager for Safety Administration, Quality Control and Environment) **Masaki Okada**
Managing Officer/Executive Director of Civil Engineering Main Office **Mutsumu Kaneko**
Managing Officer (Manager for Group Company and Carbon Neutrality) **Hiroshi Aoki**
Managing Officer/Director of Tokyo Branch **Tomoyuki Ikeda**
Managing Officer (Manager for Technology, Tokyo Head Office) **Yoshinao Mori**
Executive Officer (Manager for Technology, Civil Engineering Main Office) **Hiroyuki Kawasaki**
Executive Officer/General Manager of Personnel Dept. Administration Main Office **Kazuhito Ochida**
Executive Officer/Director of Kansai Branch **Futoshi Yoshimura**
Executive Officer/General Manager of Secretarial Dept. Administration Main Office **Ichiro Wakisaka**
Executive Officer (Manager for Technology, Civil Engineering Main Office) **Yuji Matsumoto**
Executive Officer (Manager for Technology, Civil Engineering Main Office) **Yoshihiko Koizumi**
Executive Officer (Manager for Technology, Civil Engineering Main Office) **Masayuki Sato**
Executive Officer/Deputy Director of Bldg. Construction Main Office
/General Manager of Bldg. Construction Dept. Main Office **Fumio Sasaki**
Executive Officer/General Manager of Bldg. Construction Real Estate Dept. Main Office **Takashi Saito**
Executive Officer/Director of Kyushu Branch **Hiroyuki Maeda**
Executive Officer/Deputy Director of Bldg. Construction Main Office
/General Manager of Bldg. Construction Business Dept. Main Office **Keiichi Yukawa**
Executive Officer/Deputy Director of Civil Engineering Main Office (Manager of Business Administration) **Noboru Hamazaki**

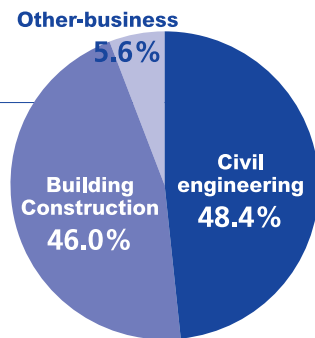
Sales/Orders

● Sales

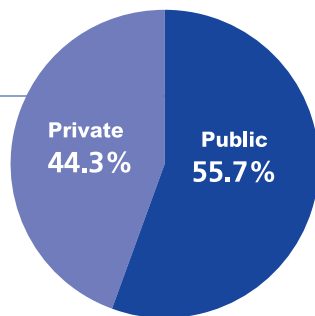


● Orders(2022)

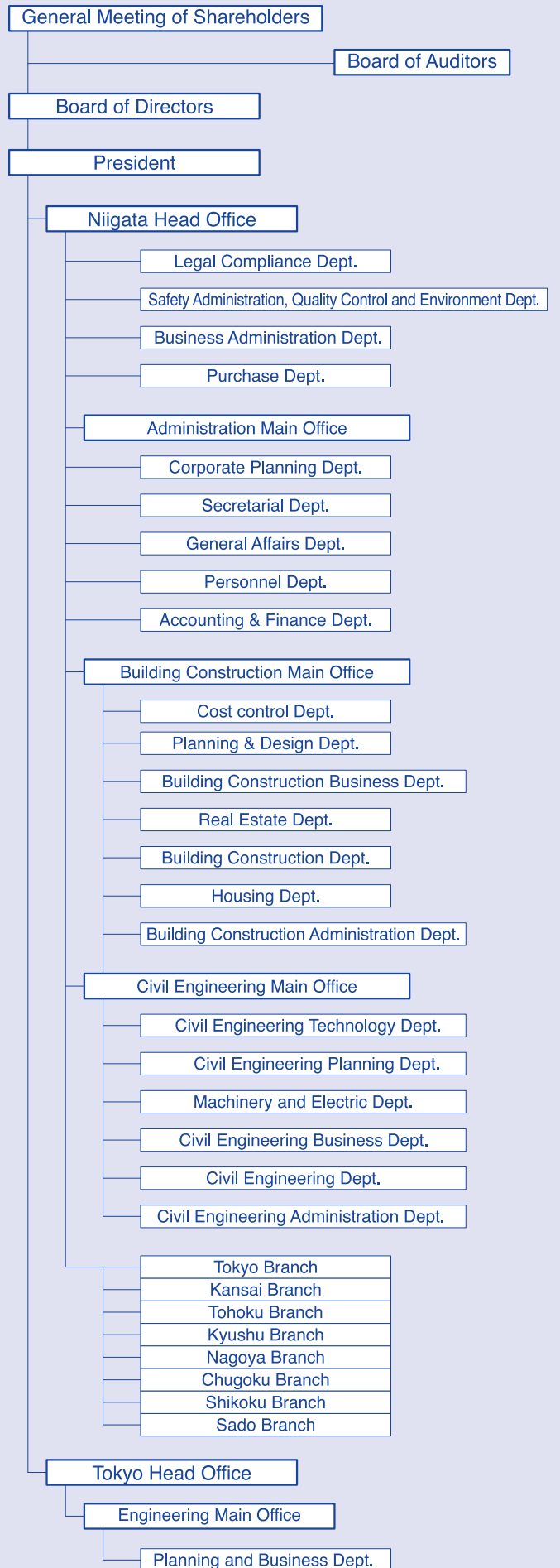
Percentage by business



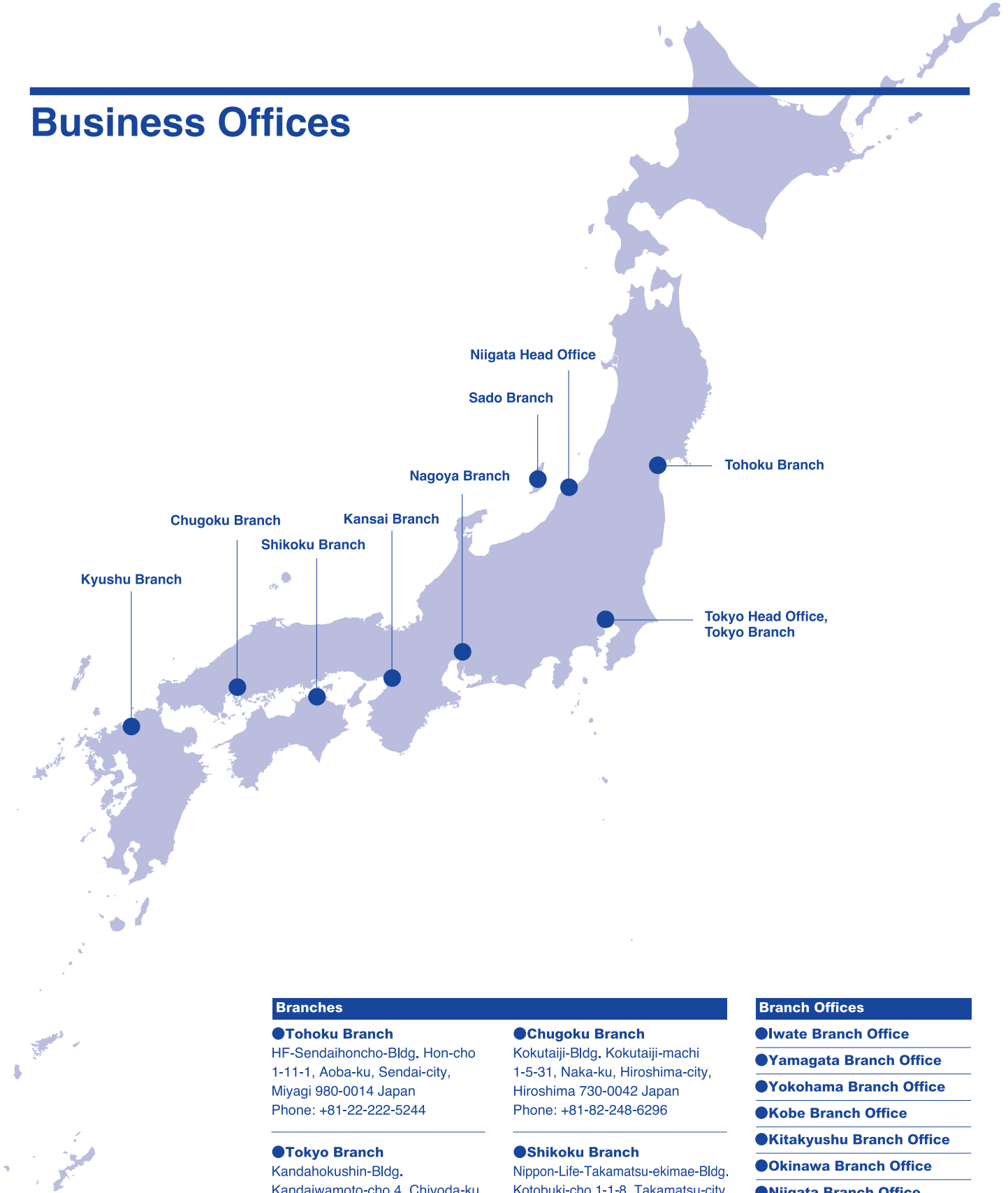
Percentage of Public / Private Construction



Organization Chart



Business Offices



Head Offices

●Niigata Head Office

Nishiminatomachi-dori
San-no-cho 3300-3, Chuou-ku,
Niigata-city, Niigata
951-8650 Japan
Phone: +81-25-229-2511

●Tokyo Head Office

Kandahokushin-Bldg.
Kandaiwamoto-cho 4, Chiyoda-ku,
Tokyo 101-0033 Japan
Phone: +81-3-3256-0920

Branches

●Tohoku Branch

HF-Sendaihoncho-Bldg. Hon-cho
1-11-1, Aoba-ku, Sendai-city,
Miyagi 980-0014 Japan
Phone: +81-22-222-5244

●Tokyo Branch

Kandahokushin-Bldg.
Kandaiwamoto-cho 4, Chiyoda-ku,
Tokyo 101-0033 Japan
Phone: +81-3-3256-0921

●Nagoya Branch

Asahi-Bldg. Meieki 5-3-8,
Nakamura-ku, Nagoya-city, Aichi
450-0002 Japan
Phone: +81-52-571-6617

●Kansai Branch

Daisan-Fuji-Bldg. Itachibori
1-3-13, Nishi-ku, Osaka-city, Osaka
550-0012 Japan
Phone: +81-6-6541-6755

●Chugoku Branch

Kokutaiji-Bldg. Kokutaiji-machi
1-5-31, Naka-ku, Hiroshima-city,
Hiroshima 730-0042 Japan
Phone: +81-82-248-6296

●Shikoku Branch

Nippon-Life-Takamatsu-ekimae-Bldg.
Kotobuki-cho 1-1-8, Takamatsu-city,
Kagawa 760-0023 Japan
Phone: +81-87-873-2128

●Kyushu Branch

Daini-Hakata-Plaza-Bldg.
Hakataekihigashi 2-8-3, Hakata-Ku,
Fukuoka-city, Fukuoka
812-0013 Japan
Phone: +81-92-474-0127

●Sado Branch

Ryotsuebisu 351-1, Sado-city, Niigata
952-0011 Japan
Phone: +81-259-27-3135

Branch Offices

●Iwate Branch Office

●Yamagata Branch Office

●Yokohama Branch Office

●Kobe Branch Office

●Kitakyushu Branch Office

●Okinawa Branch Office

●Niigata Branch Office

●Murakami Branch Office

●Kaetsu Branch Office

●Toukan Branch Office

●Sanjo Branch Office

●Chuetsu Branch Office

●Uonuma Branch Office

●Joetsu Branch Office

Agencies

●Kawasaki Agency

History

1934	Honma Company founded by Ishitaro Honma
1946	Registered HONMA Corporation with a capital ¥150,000
1948	Opened Ryotsu Branch Office, now Sado Branch
1950	Registered as a construction company with Niigata Prefecture, Registration No (i) 2231
1951	Opened Tokyo Agency, now Tokyo Branch
1960	Opened Nagoya Agency, now Nagoya Branch
1962	Opened Osaka Agency, now Kansai Branch
1963	Sixth Capital Increase to ¥100,000,000
1965	Opened Sendai Agency, now Tohoku Branch
1972	Eleventh Capital Increase to ¥500,000,000
1973	Company obtained Contractor permit from Ministry of Construction, (Toku-48) No.2475
1977	Elected Chairman and Representative Director, Ishitaro Honma Elected CEO and President, Shigeru Honma
1982	Opened Kyushu Agency, now Kyushu Branch
1984	Opened Takamatsu Branch Office, now Shikoku Branch
1985	Twenty-first Capital Increase to ¥1,000,000,000
1986	Opened Hiroshima Branch Office, now Chugoku Branch
1991	Road and Pavement Construction Section was established as a independent Company, Honma Road Construction Corporation
1993	Tokyo Head Office was established
1996	Elected Chairman and Representative of Director, Shigeru Honma Elected CEO and President, Tatsuro Honma
1999	Obtained ISO9000S certification for Niigata Head Office and all branches
2001	Obtained ISO14001 certification for the entire company
2003	Obtained ISO9001 integrated certification for the entire company
2004	Introduced management officers position system/ corporate officer system
2012	Obtained OHSAS18001 certification for the entire company
2019	Changed the applicable standard to ISO45001:2018, and recertified
2022	Established the Honma Scholarship Foundation

Group Companies

- **HONMA ROAD CONSTRUCTION Corporation**
 - ◇ **NIIGATA MIRAI Corporation**
 - ◇ **GOSEN HOZAI Corporation**
- **HONMA ZOUEN · RYUSEI Corporation**
- **HONMA CONCRETE INDUSTRY Corporation**
- **HONMA GIKEN Corporation**
- **NIIGATA KOGYO Corporation**
- **NIIGATA KENKO Corporation**
- **SANTERA Corporation**
 - ◇ **SADO KAIYO BUSSAN Corporation**
- **HONMA RENEWABLE POWER Corporation**
- **SHIUN GOLF CLUB Corporation**

HONMA Corporation

Niigata Head Office

Nishiminatomachi-dori San-no-cho 3300-3, Chuou-ku, Niigata-city, Niigata 951-8650 Japan
Phone: +81-25-229-2511

Tokyo Head Office

Kandahokushin-Bldg. Kandaiwamoto-cho 4, Chiyoda-ku, Tokyo 101-0033 Japan
Phone: +81-3-3256-0920

URL <https://www.honmagumi.co.jp>